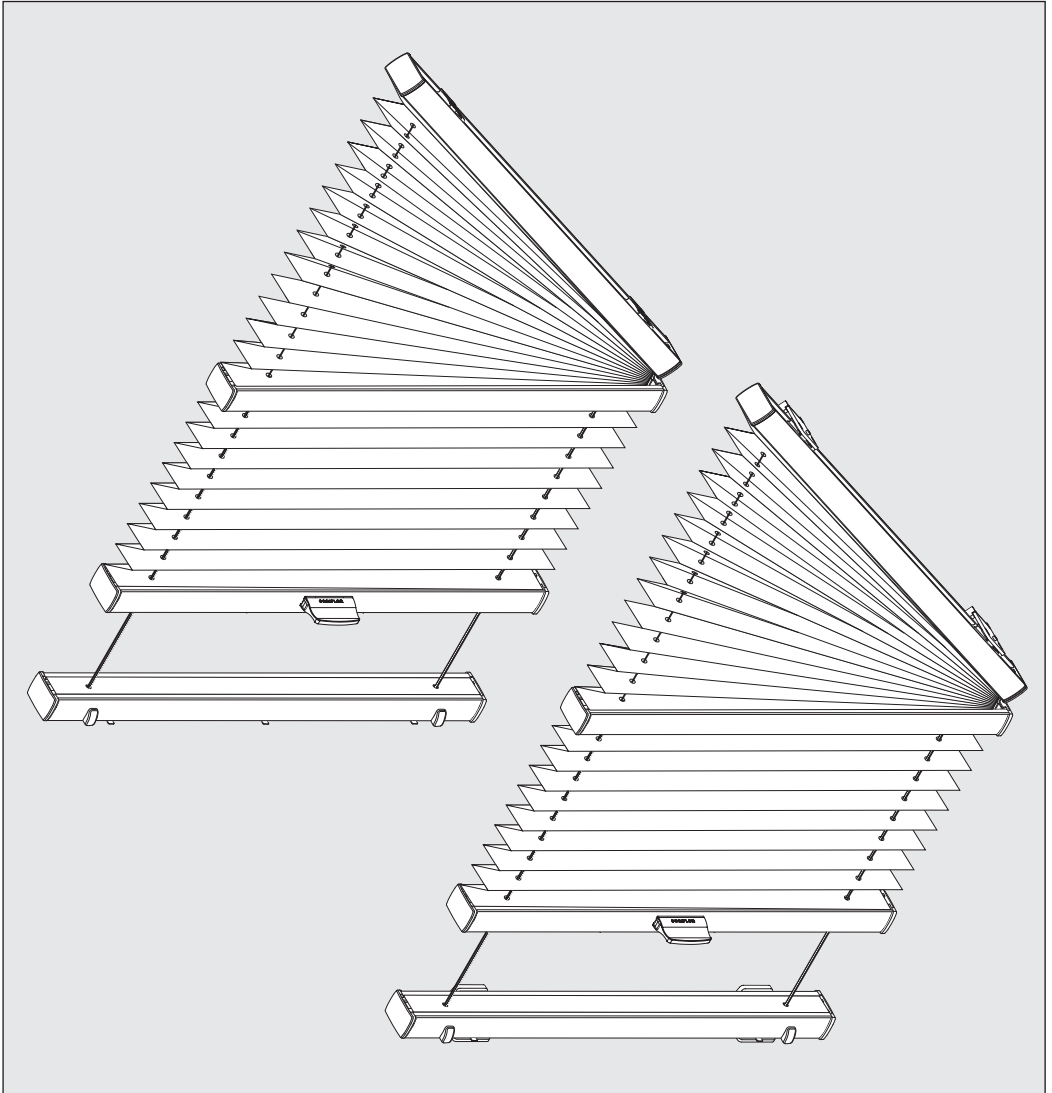
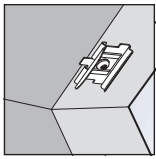
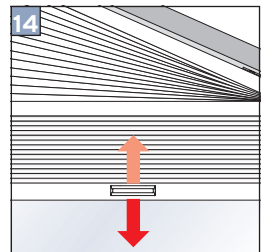
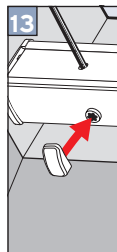
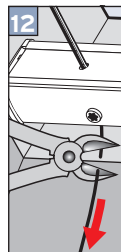
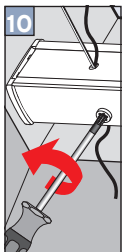
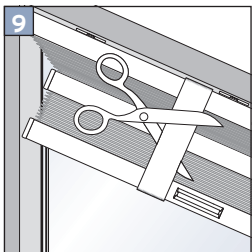
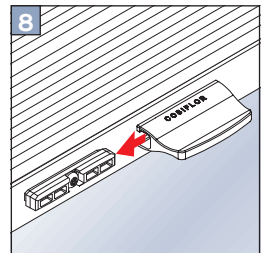
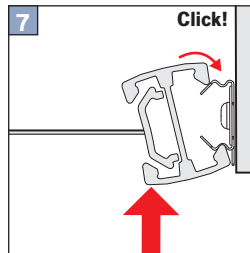
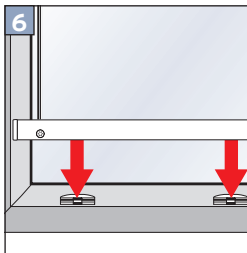
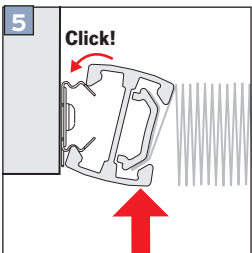
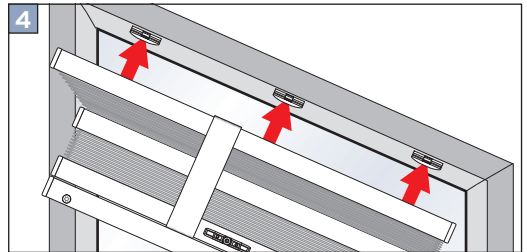
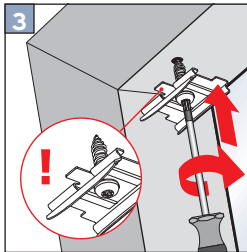
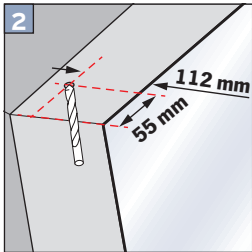
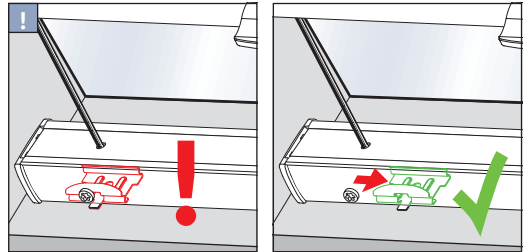
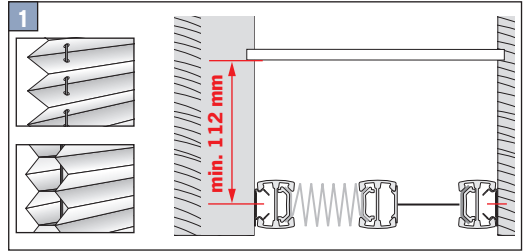
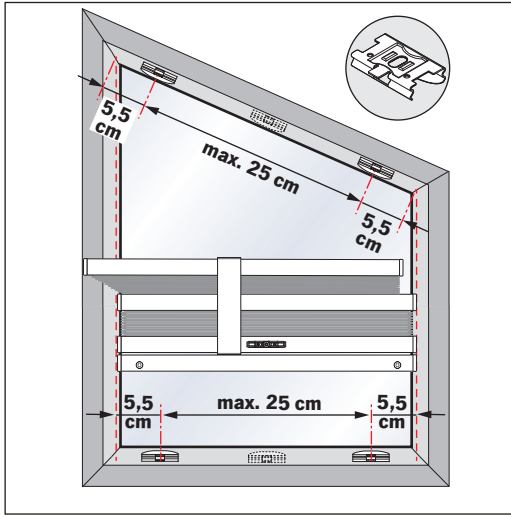
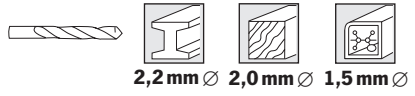


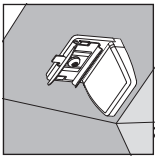
PL40 – Montage- und Bedienungsanleitung



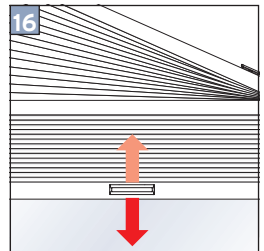
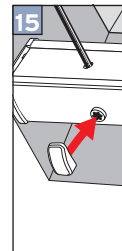
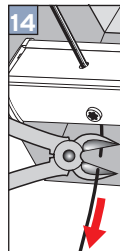
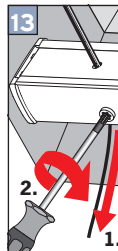
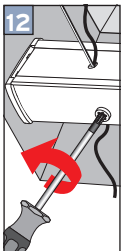
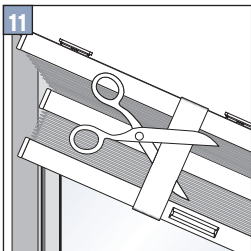
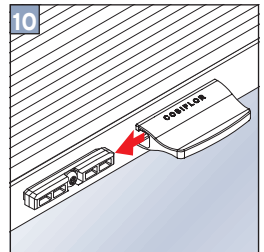
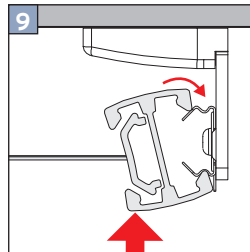
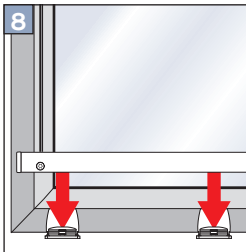
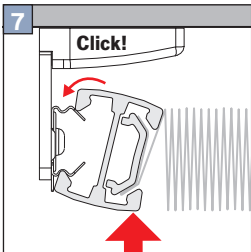
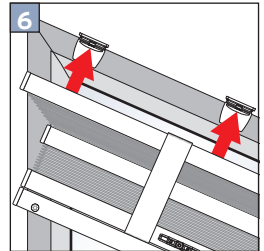
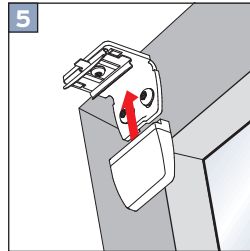
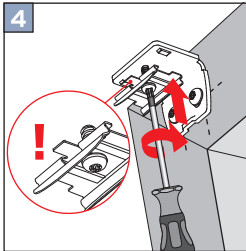
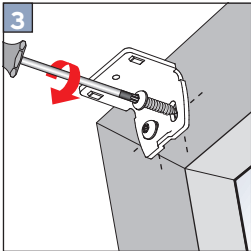
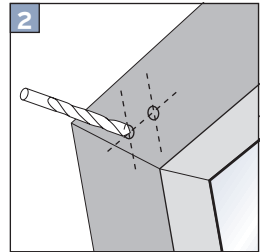
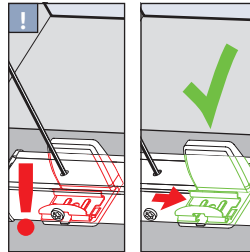
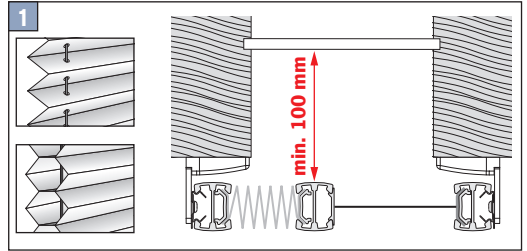
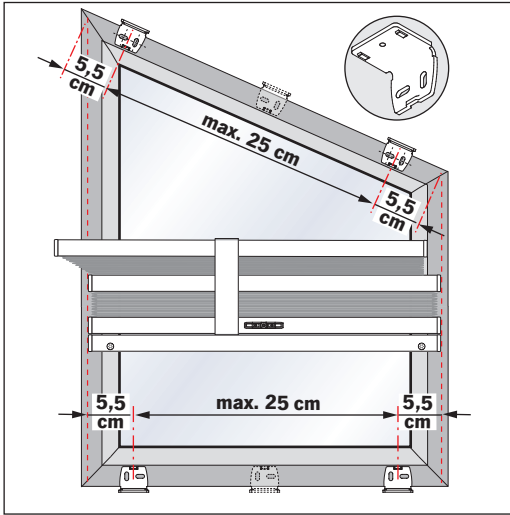


Falzmontage

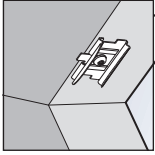




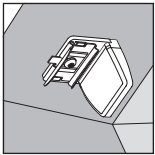
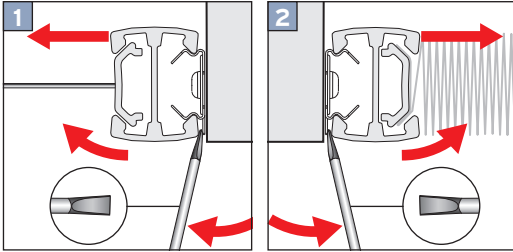
Winkelmontage



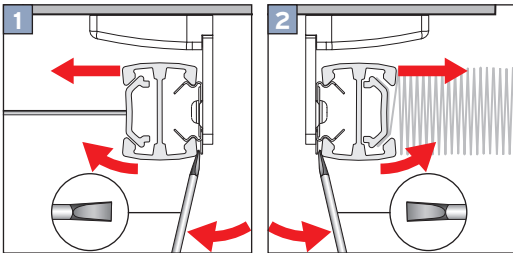
DEMONTAGE



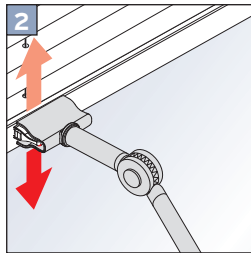
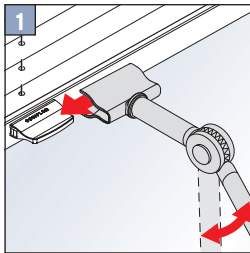
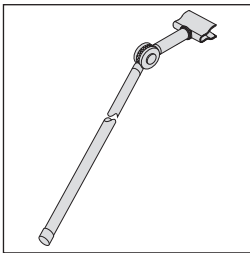
Falzmontage



Winkelmontage



Optional: Bedienung mit Bedienstab



Die Plafondanlage PL 40 mit ihrem schrägen Oberprofil kann für alle Fenstergrößen und bis zu einer Anlagenlänge von 400cm gefertigt werden. Die Montage erfolgt mit Deckenclips, Befestigungswinkel oder über Montageprofile. Der Behang kann durch Verschieben des unteren Profils stufenlos eingestellt werden - der dreieckige Bereich ist nicht bedienbar. Für eine Bedienung des Plissees bei großen Deckenhöhen können Sie zusätzlich einen [Bedienstab](#) in verschiedenen Längen auswählen.