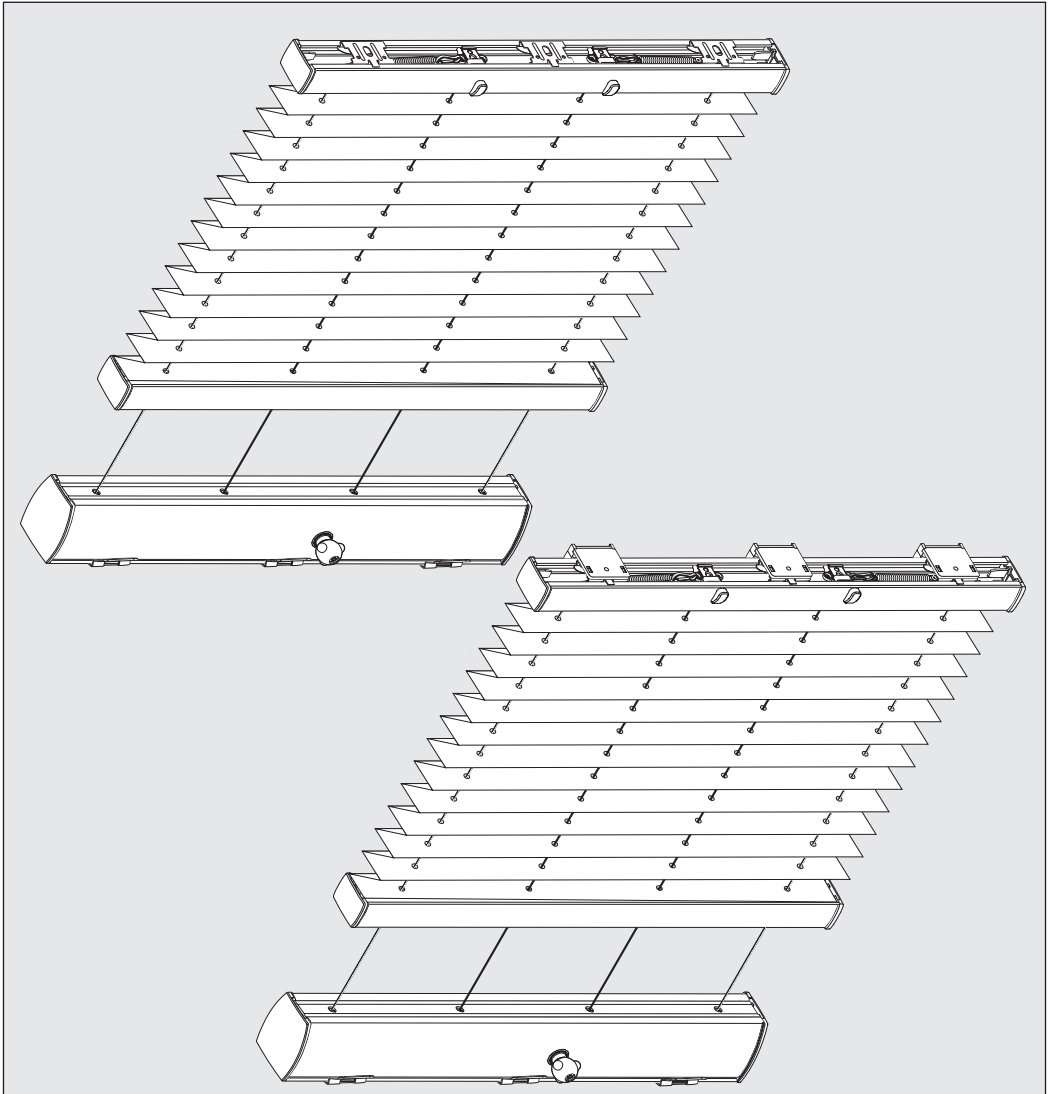
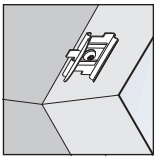


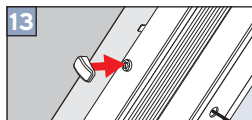
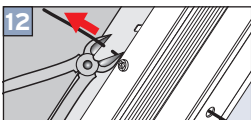
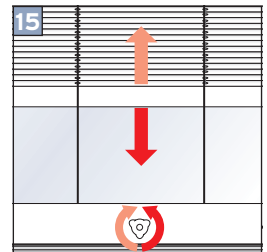
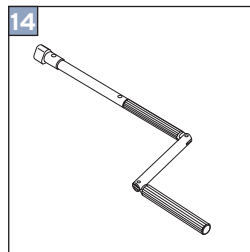
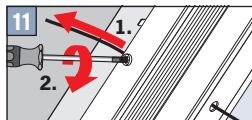
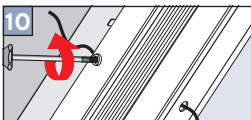
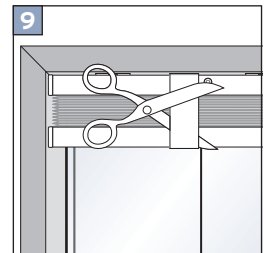
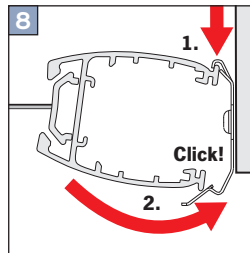
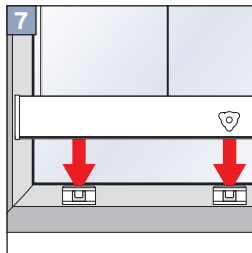
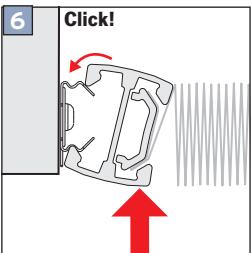
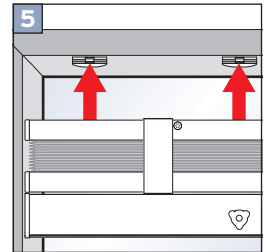
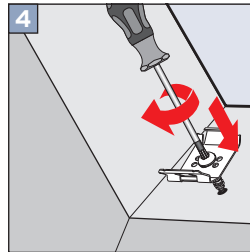
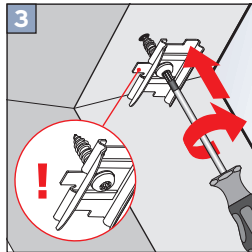
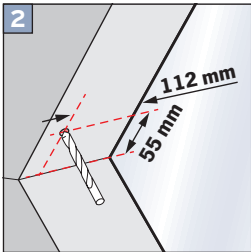
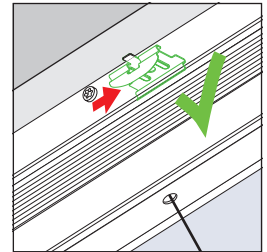
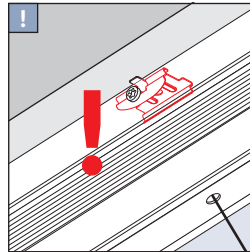
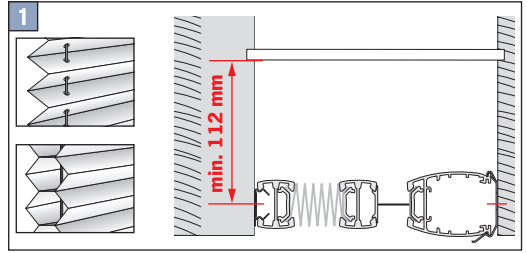
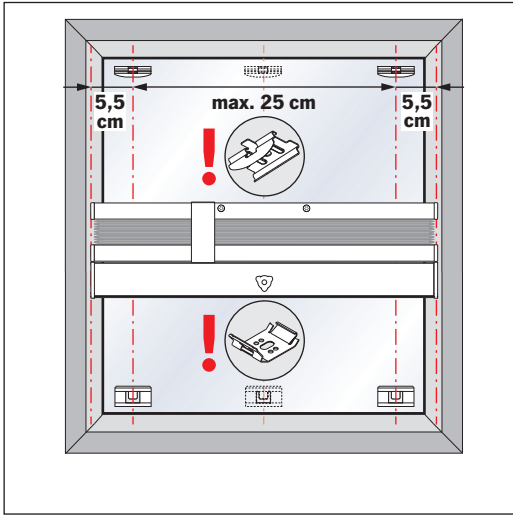
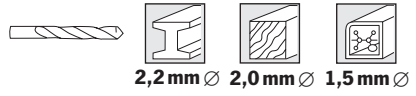


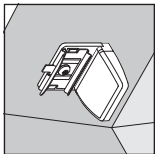
## PLK13 – Montage- und Bedienungsanleitung



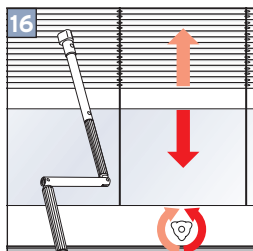
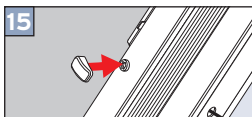
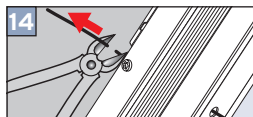
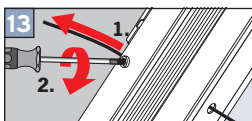
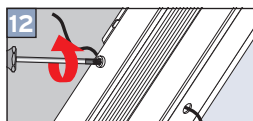
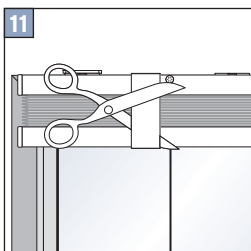
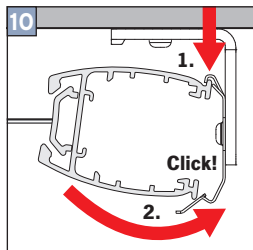
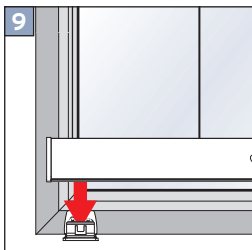
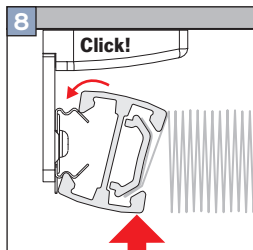
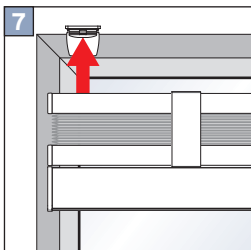
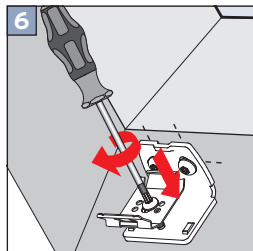
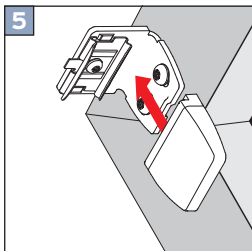
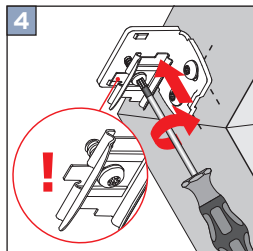
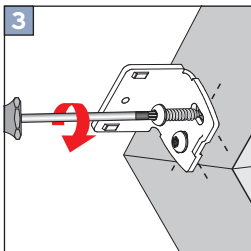
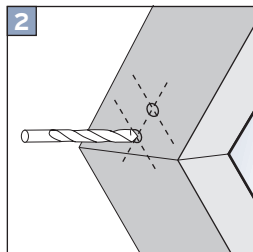
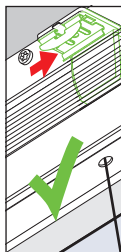
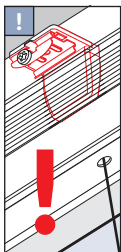
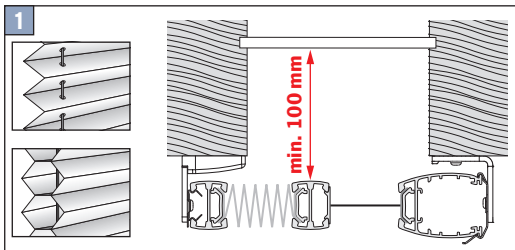
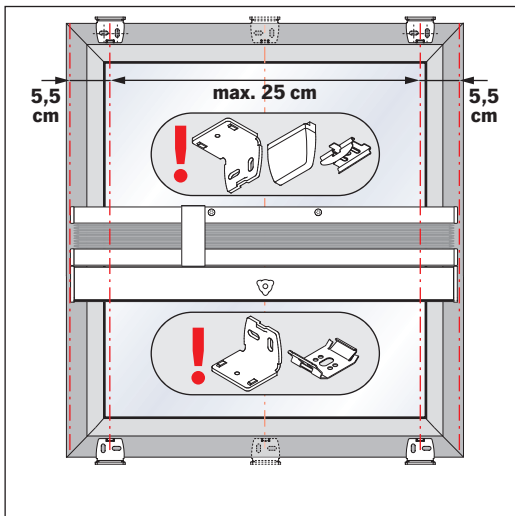


# Falzmontage

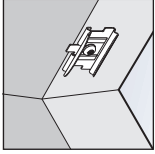




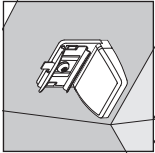
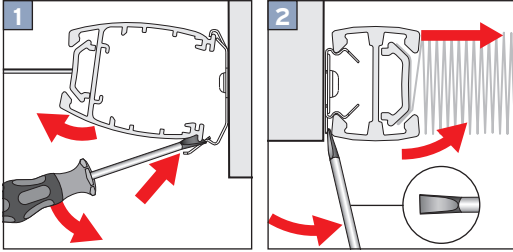
# Winkelmontage



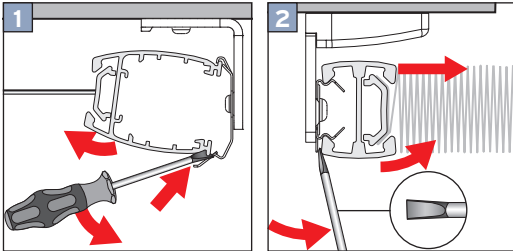
## DEMONTAGE



Falzmontage



Winkelmontage



Plafond-Anlagen wurden speziell für Wintergartenfenster entwickelt. Sie können direkt im Fensterfalz oder per Winkel am Rahmen montiert werden. Alternativ ist auch die Montage mittels Montage-Profilen möglich.

Die Bedienung erfolgt bei dem PLK13-Modell über eine Kurbel oder einen Elektrostab an der oberen Schiene.

[Übersicht aller Montageanleitungen](#)