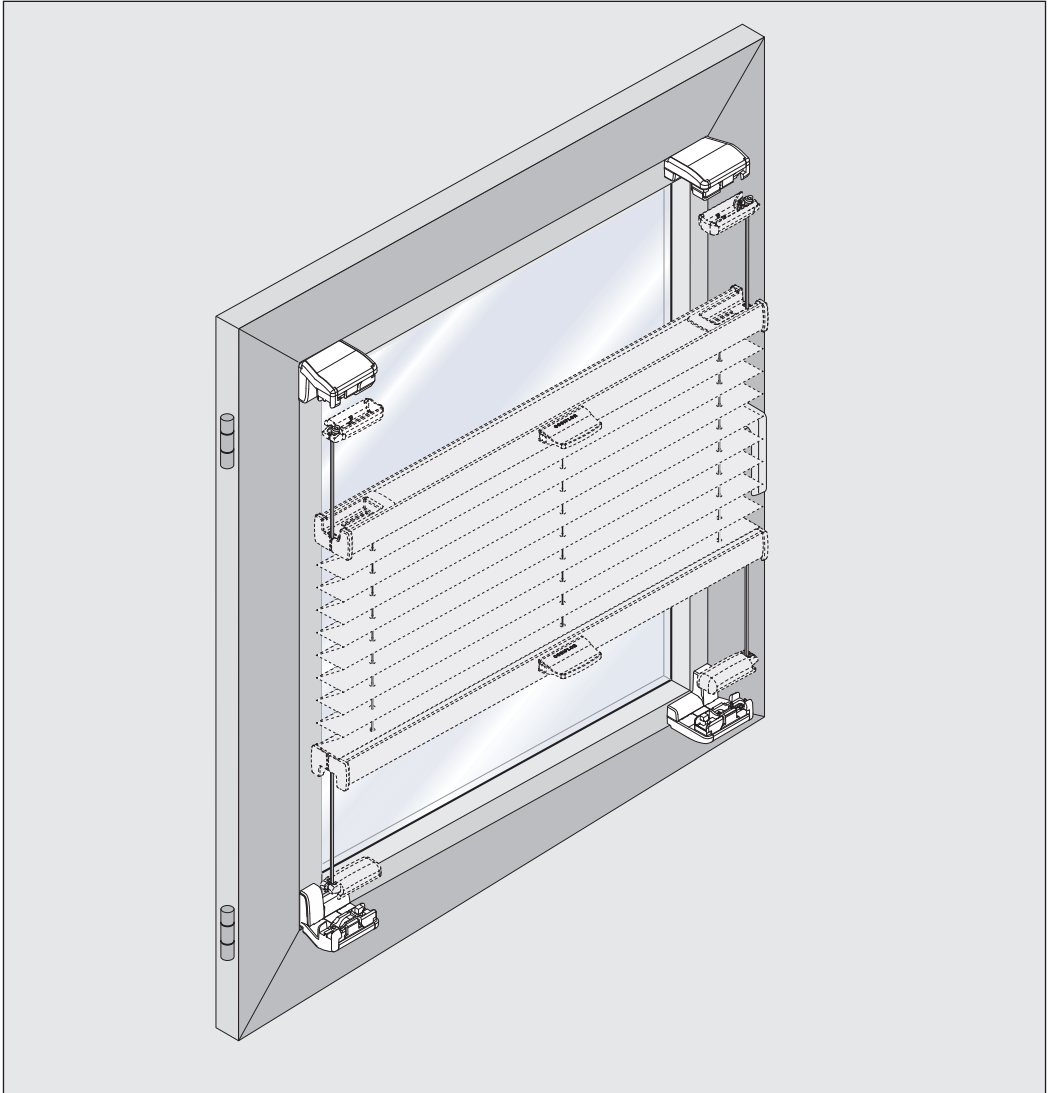
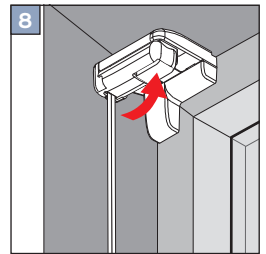
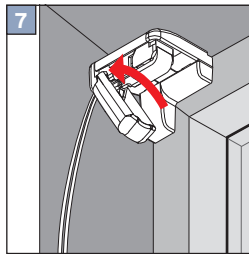
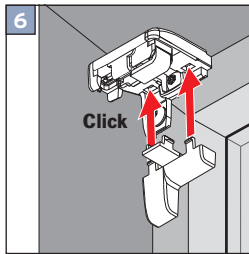
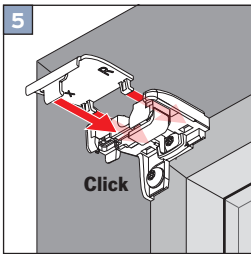
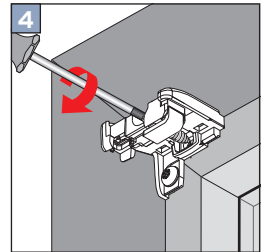
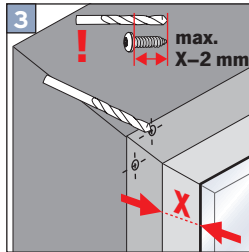
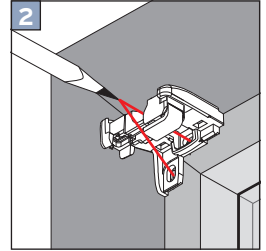
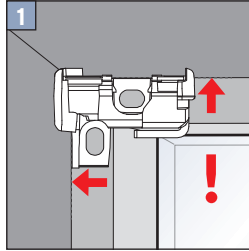
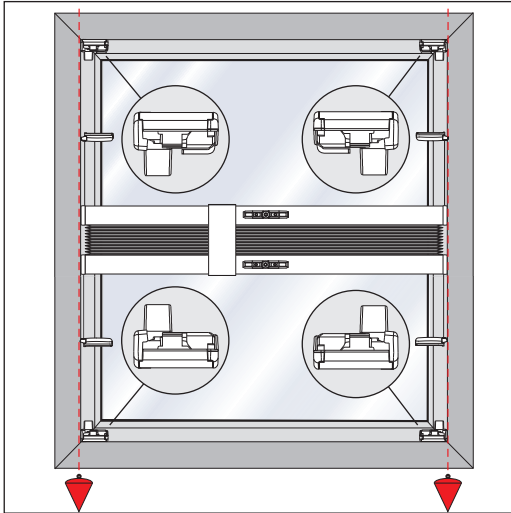


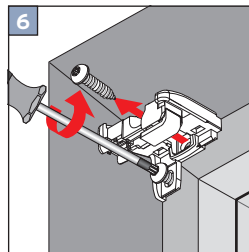
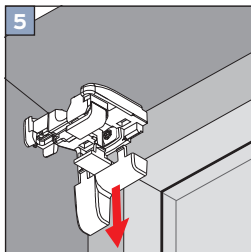
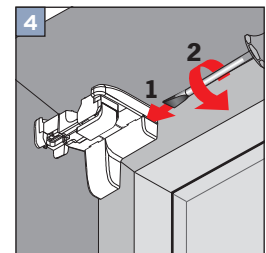
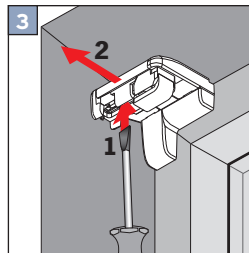
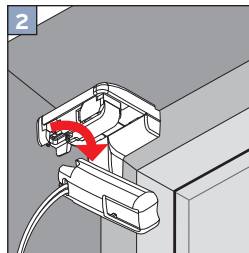
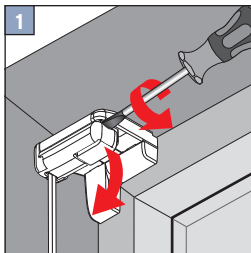
## VS2 – Montage mit Glasleistenwinkel



# MONTAGE VS 2



# DEMONTAGE



## **Cosiflor mit Glasleistenwinkeln**

Die [Befestigung mit Glasleistenwinkeln](#) erfolgt am Fensterflügel. Die Glasleistenwinkeln werden in den Ecken der äußeren Glasleiste am Fensterflügel verschraubt. Anschließend wird [das Plissee](#) an den Glasleistenwinkeln befestigt.

Der Vorteil dieser Montageart ist, dass sie für nahezu jedes Fenster, unabhängig von der Glasleistentiefe oder Fenstermaterial, angewendet werden kann - egal ob Holz-, Aluminium- oder Kunststofffenster.