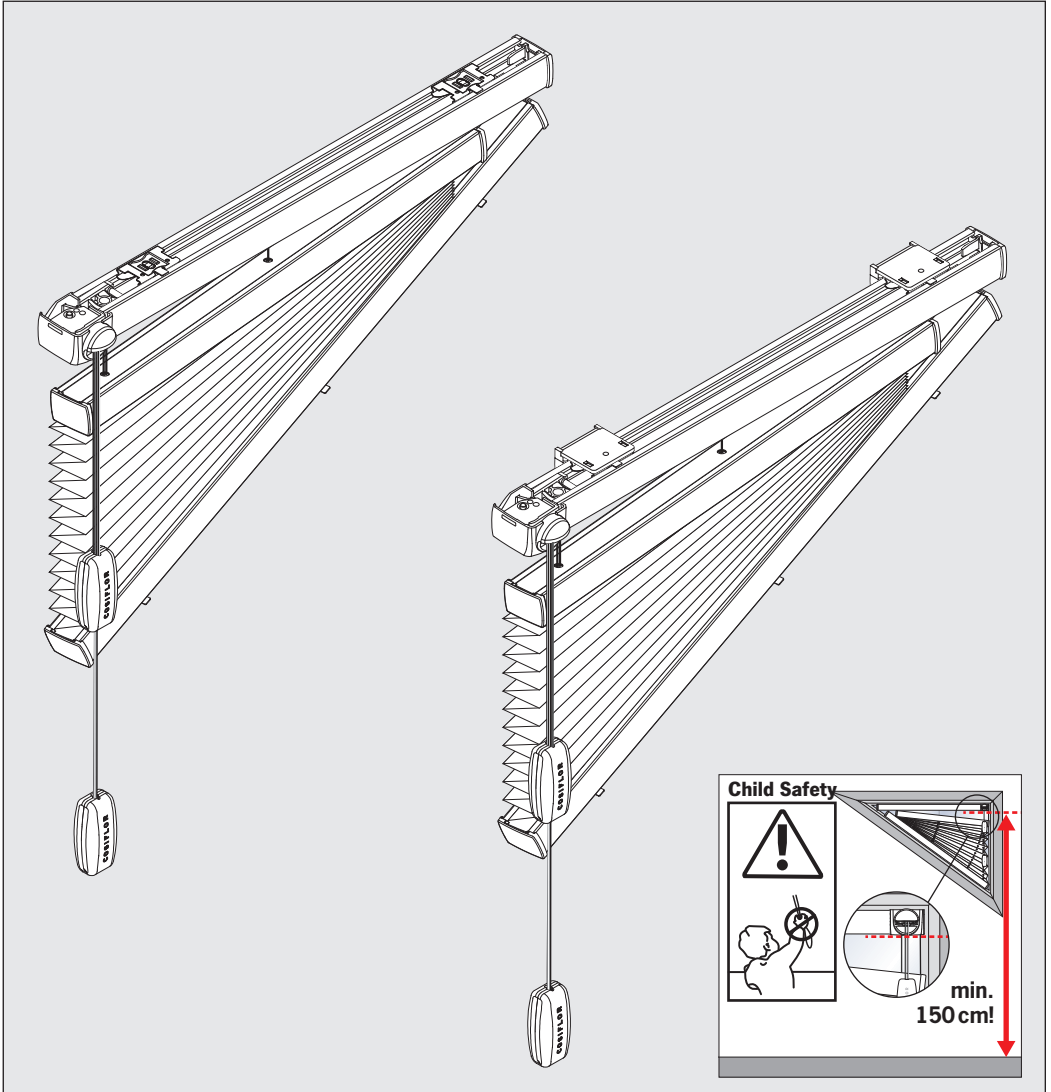
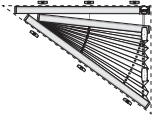
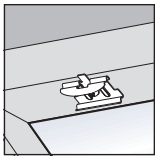
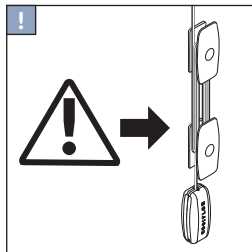
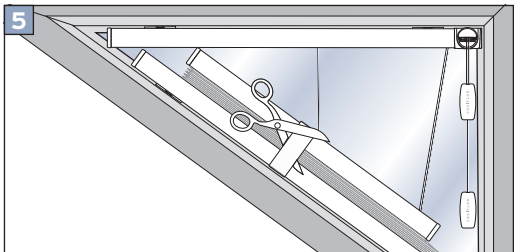
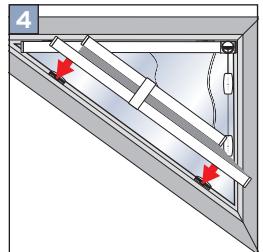
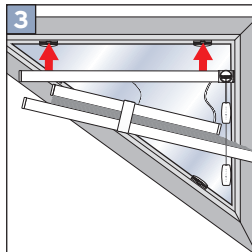
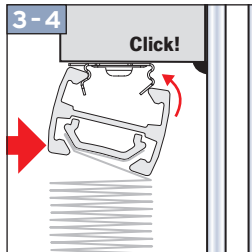
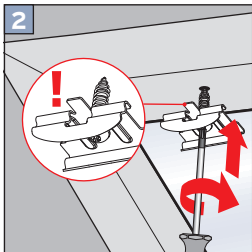
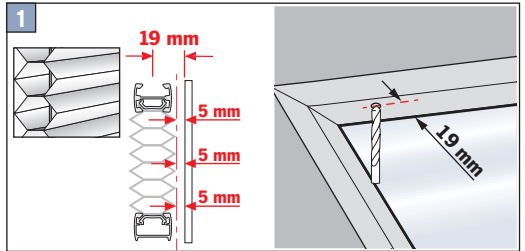
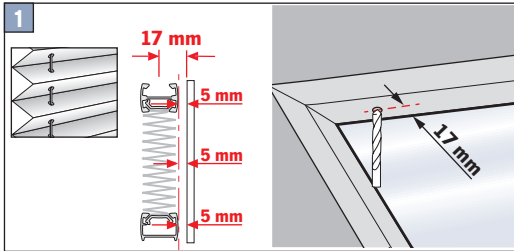
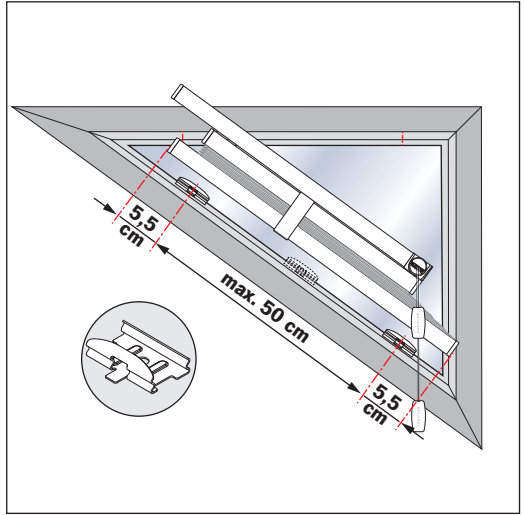
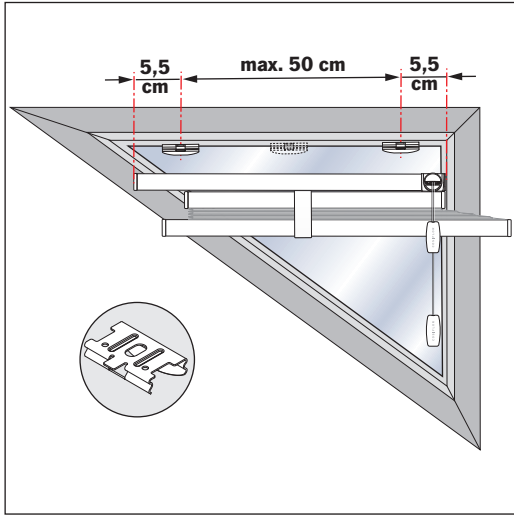
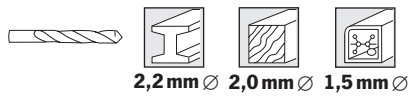


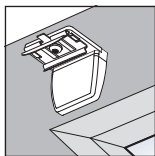
# FD Slope 4 – Montage- und Bedienungsanleitung



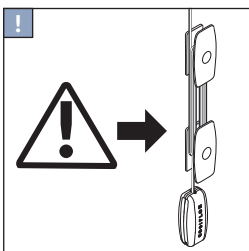
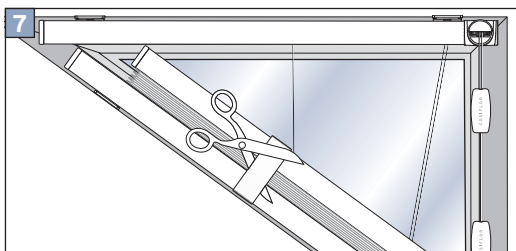
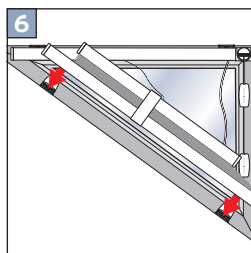
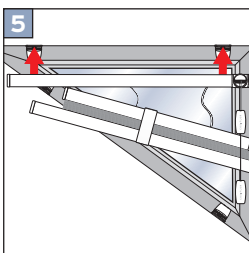
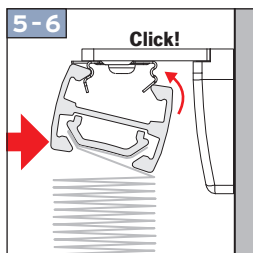
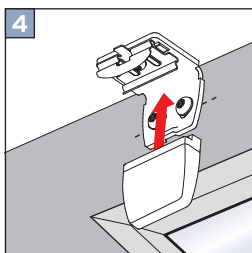
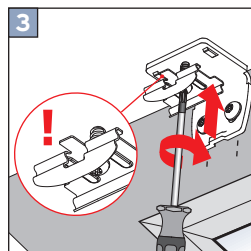
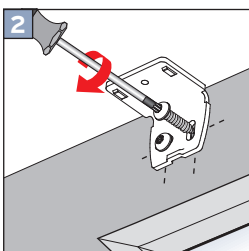
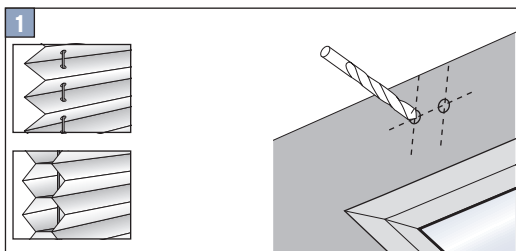
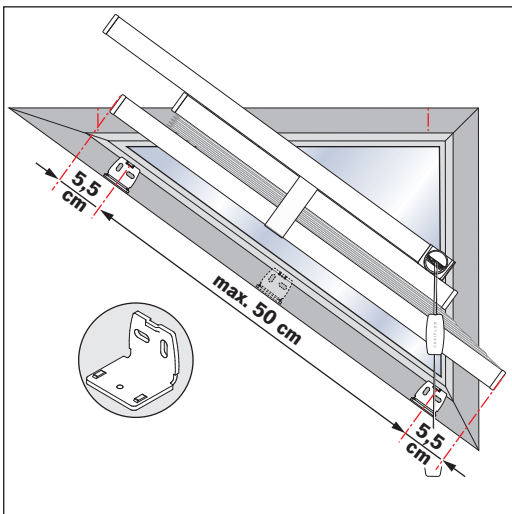
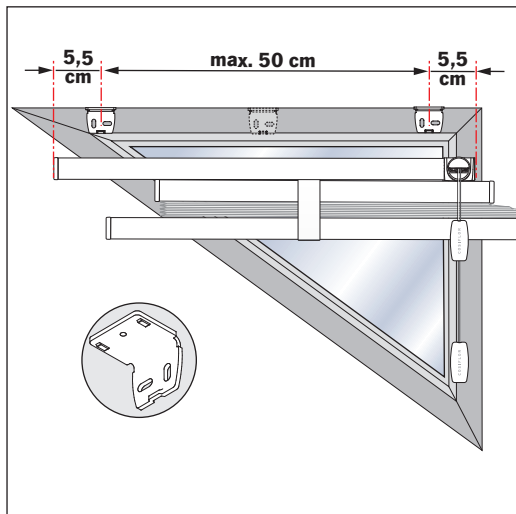


# Falzmontage

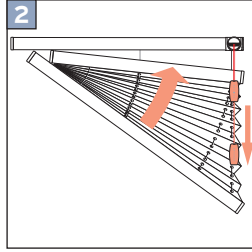
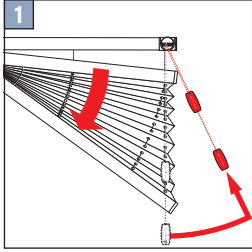




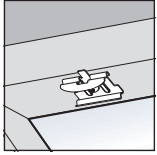
## Winkelmontage



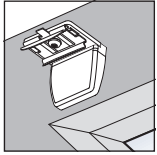
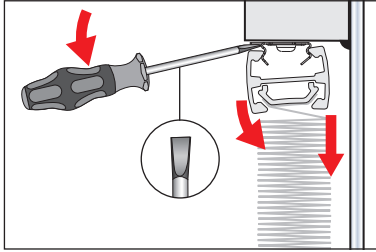
## Bedienung



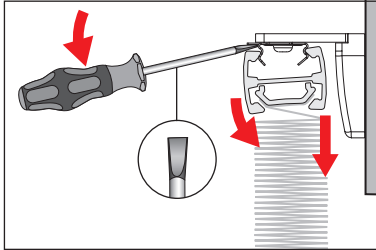
## Demontage



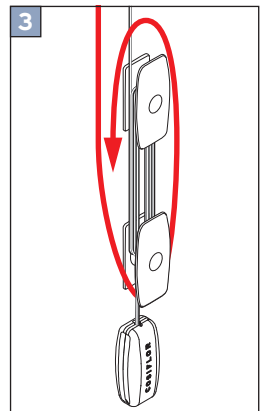
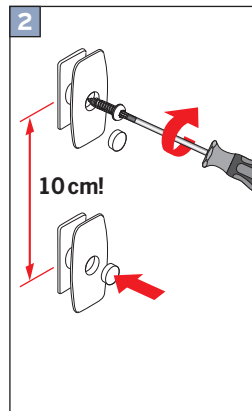
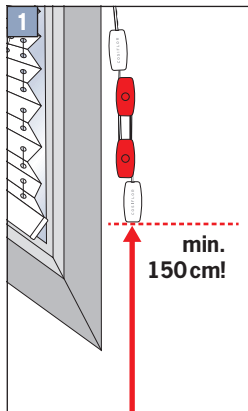
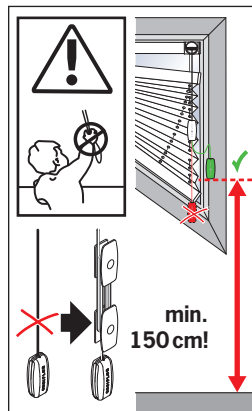
Falzmontage



Winkelmontage



## Child Safety / KINDERSICHERHEIT



Das FD Slope 4 Modell ist ein freihängendes Plissee mit festmontierten Ober- und Unterschiene. Die Mittelschiene kann mithilfe der Zugschnur und hochwertiger Schnurbremse von oben nach unten geöffnet werden.

Die Befestigung kann über Halteclips direkt im Glasfalz vor der Scheibe erfolgen oder mittels Wandwinkel am Fensterflügel. Sollten Sie eine abgeschrägte Glasleiste haben, so empfiehlt es sich [Ausgleichskeile](#) für die Montage direkt vor der Scheibe zu verwenden. Die Ausgleichskeile werden unter die Halteclips gelegt und sorgen so für eine gerade Montagefläche der Oberschiene.

[Unsere Montageanleitungen in der Übersicht zum Download](#)